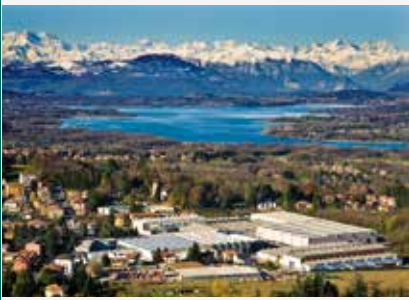




# FICEP

## Company Profile



MADE IN ITALY





FICEP was founded in October 1930 in Gazzada Schianno, near Milan, as “**F**abbrica **I**taliana **C**esoie **E** **P**unzonatrici” - Italian Shears and Punching Machines Factory.



1930 - 1940

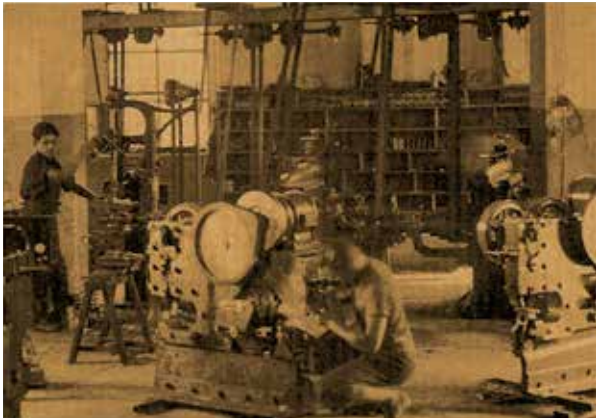


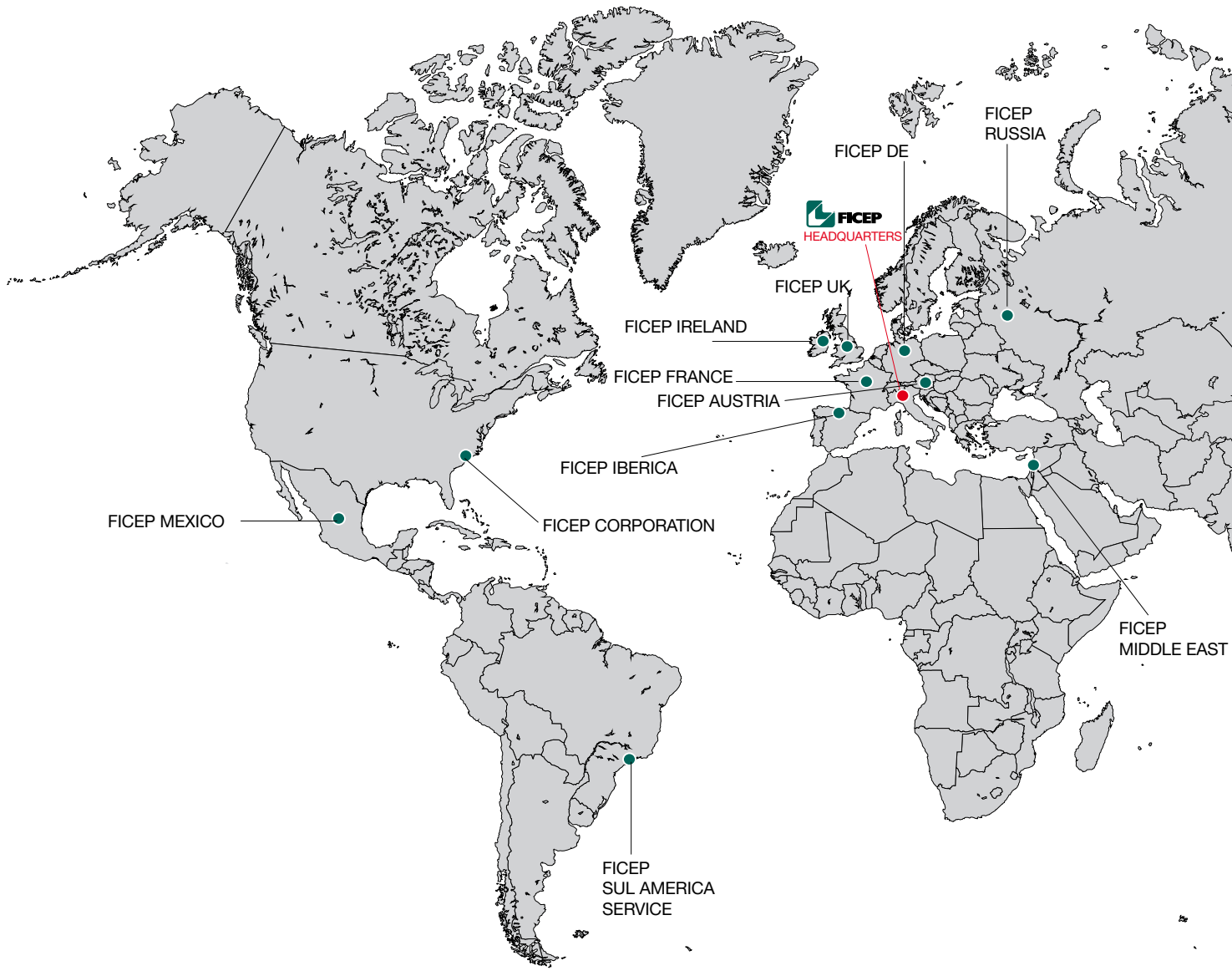
1940 - 1950



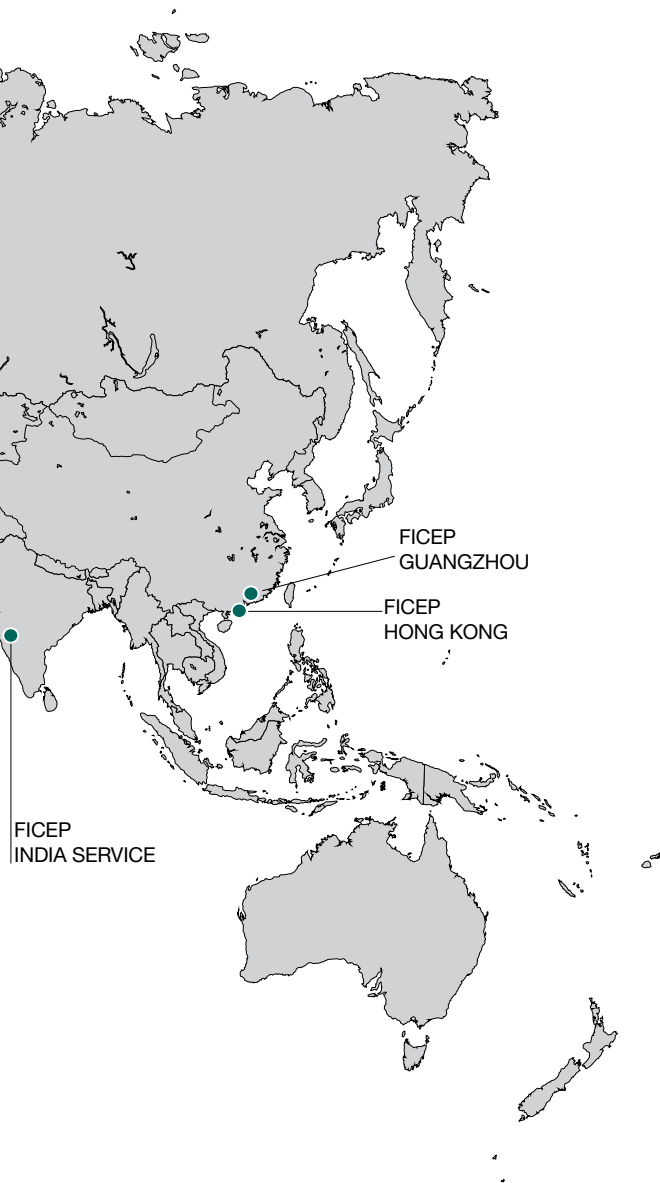
1950 - 1975











### **Global presence**

300 of the 500 people working for the Ficep Group are based here. With over a dozen subsidiaries and almost 100 agents across the world, Ficep is truly an international corporation.

### **Family Company**

Despite the global dimension, Ficep maintains its 'family company' characteristics, proprietors who are active and visible in the management of the group. They ensure continuity of vision and values between the past, present and future of the company.

## Worldwide Network





# Headquarters

Ficep manufactures the machines and develops the production management software for structural steel fabricators. Today there is around 70 000m<sup>2</sup> of covered manufacturing facilities across 5 plants. The headquarters and main plant is located in Gazzada Schianno Italy with three additional plants nearby. There is also an additional plant in Bordeaux, France.



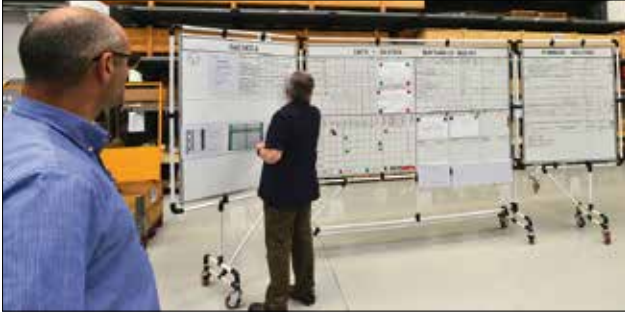


By investing in and owning the complete manufacturing process, Ficep is able to optimize its processes and offer extremely high quality equipment. It also enables Ficep to be more flexible and innovative in its approach enabling rapid prototyping and a faster response to variable market demands





# Main Manufacturing and Machining Plant



The main plant in Gazzada Schianno is within the same complex as the corporate headquarters and the Ficep Academy

At the main plant there are two machining divisions for processing welded frames for Ficep's plate and forging machines and four assembly lines for Ficep drills, copers, forging presses and plate processing equipment.



The Ficep Manufacturing Process reduces or eliminates waste in the production process and follows lean principles which have a proven track record of operational and strategic success which ultimately translates into increased value for the end customer.

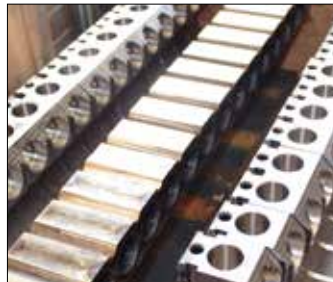
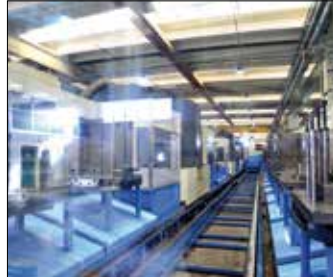






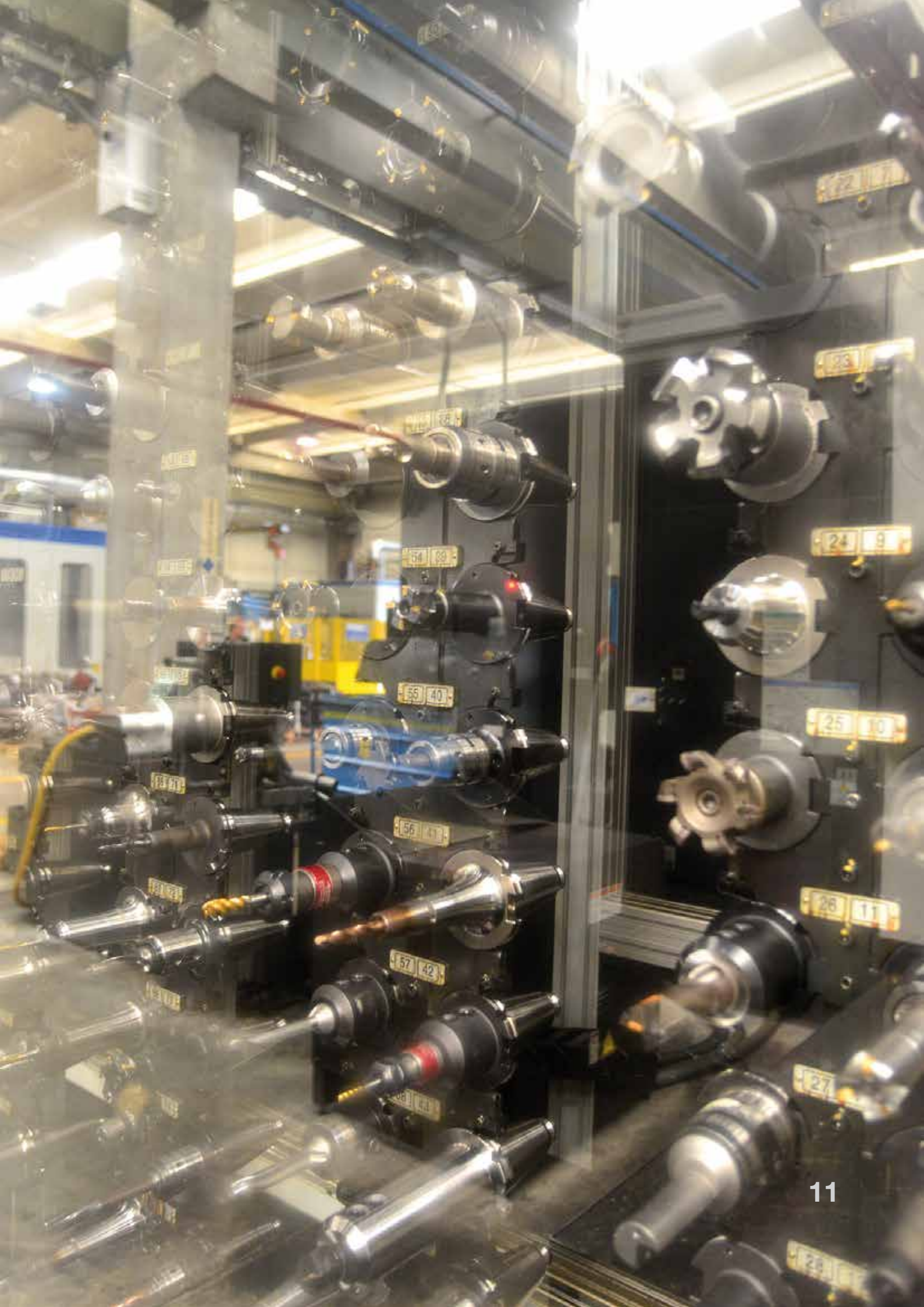


# Machining Plant



This plant is located a few kilometres away from the main plant and is equipped with fully automatic Mazak lines that run 24/7 to deliver a continuous supply of small and medium size parts for all Ficep equipment. Due to its proximity to the main facility, logistics are easy to manage.







# Manufacturing Plants



Again just a few kilometres away from the main facility and headquarters, the two satellite manufacturing plants are dedicated to producing all the Ficep angle lines and saw lines.







# Research & Development



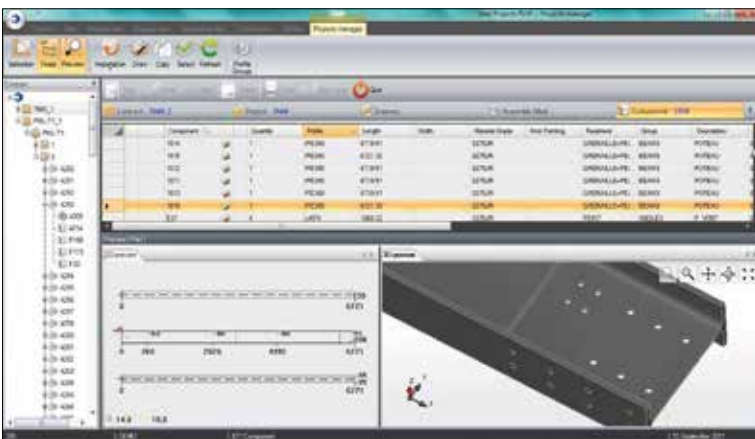
Ficep is committed to innovation. As such, the Research and Development (R&D) department is an essential and central component of the company. Ficep's R&D department employs 50 dedicated personnel including engineers, technicians and CAD/CAM operators who focus on designing, experimenting and developing prototypes for the future needs of the steel industry.

The research investment is focused across a broad array of goals from reducing energy consumption to increasing speed, functionality and efficiency of existing solutions to developing completely new solutions for the market.

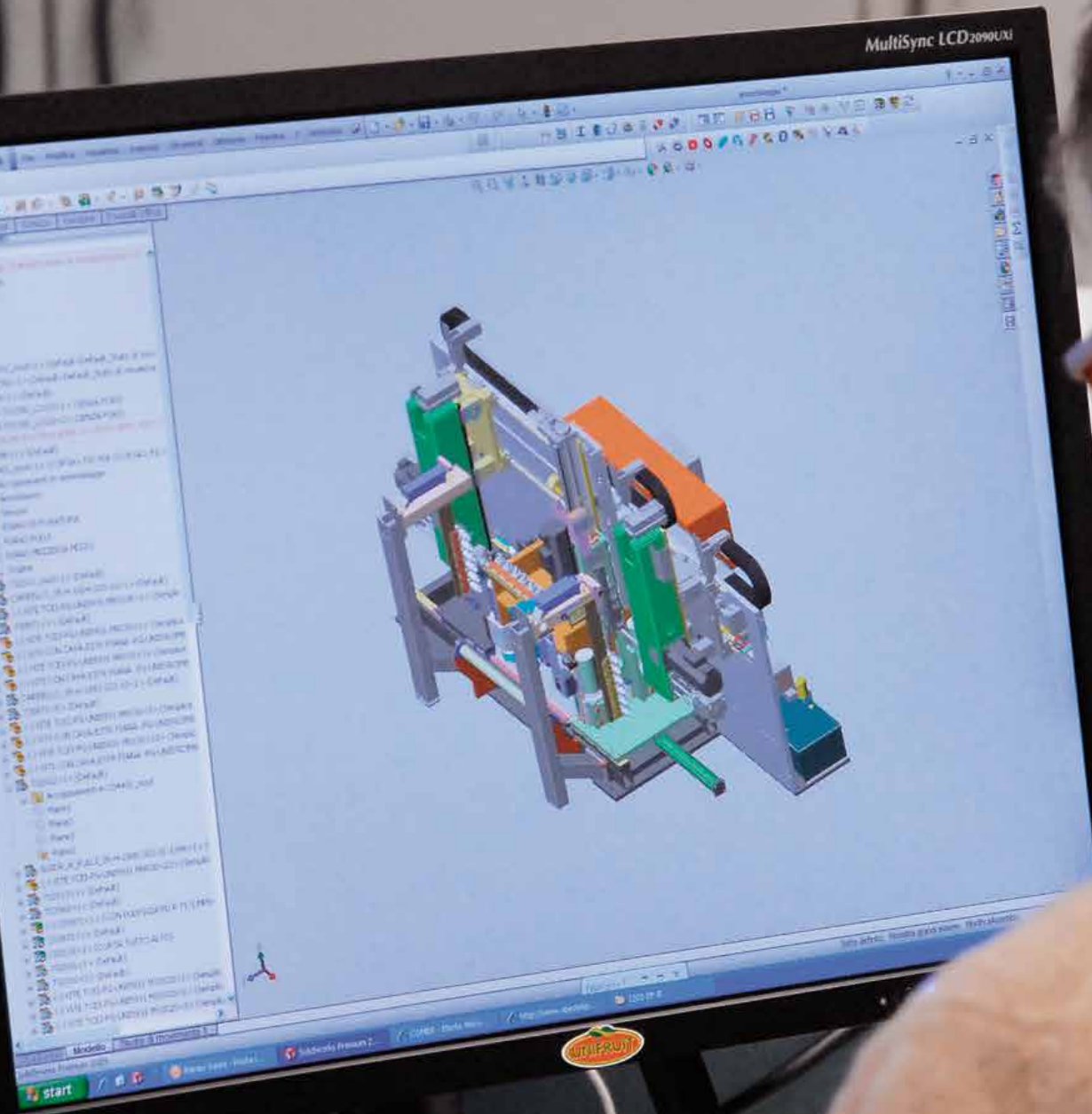


## Software and Technology

Steel Projects is a business division within Ficep Group. It is located in Vienne, France and develops PLM (Product Lifecycle Management) software for managing steel fabrication. Steel Projects PLM manages every aspect of steel fabrication including estimating, project management, production management, CNC control, production tracking and forecasting. By providing integration with CAD, BIM, ERP, accounting and other business systems, it has become an integral part of Ficep's overall offering and the central management tool for managing steel fabrication.









# The Academy of Technology



## The Academy

The Ficep Academy of Technology is the culmination of years of planning to offer a truly unique experience for customers, operators and users of Ficep equipment and technology. This state of the art facility was finished in 2012 and consists of a 2000m<sup>2</sup>/3000SF showroom, high-tech classroom facilities, meeting rooms and a lecture hall.

The showroom includes a full range of Ficep equipment that can be customized and arranged to provide personalized experiences for customers. Coupled with the training classrooms and expert trainers the academy enables fabricators (from owners to operators) to fully understand how to plan their implementation, manage their production and generally how to maximize their investment. Aside from access to all of Ficep's equipment, simulators, software and other technology, the academy offers training on integration with other systems and technology as needed.





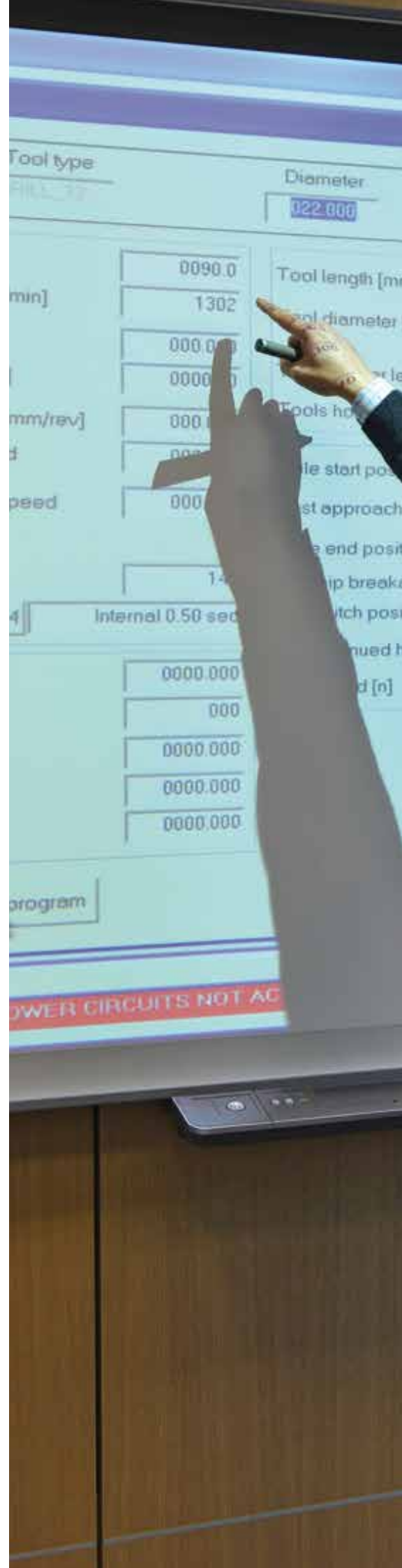




# Training programs

Education and knowledge is at the heart of any well performing product or service. Ficep understands this and has made it an essential part of their offering around the world.

At the Ficep Academy and in subsidiaries around the world, in-depth education and training courses are available to provide every operator and owner the ability to acquire the know-how necessary to use Ficep products to their potential. Ficep also offers personalized training programs as needed at the customer's facility.





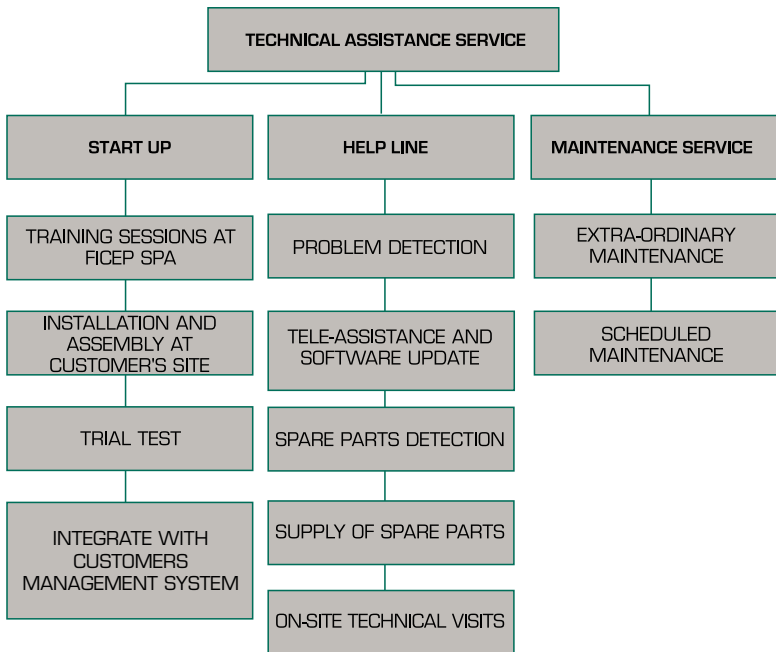




# World Class Services

Worldwide, at subsidiaries and via focused support service centers, there are over 150 people working in Ficep Customer Services managing training, installations and support. The Ficep Help Line is staffed by professional technicians who are experts at analyzing and diagnosing problems and resolving them.

Ficep TeleService allows remote technicians to 'dial-in' and directly interact with the customer's machine to diagnose and correct problems. 80% of cases are resolved using this technology dramatically reducing the potential downtime for the customer.









# Spare Parts and Consumables

As well as producing unique systems and machines, Ficep has always offered a complete range of very high quality tools and spare parts which enable the best results to be obtained. Ficep directly manufactures punching dies, marking tools, blades and all other related tools. In addition Ficep collaborates with the best manufacturers in the world to supply saw blades, drilling and cutting tools. Spare part and consumable inventories are located around the world to ensure customer's requirements can be met straight away.





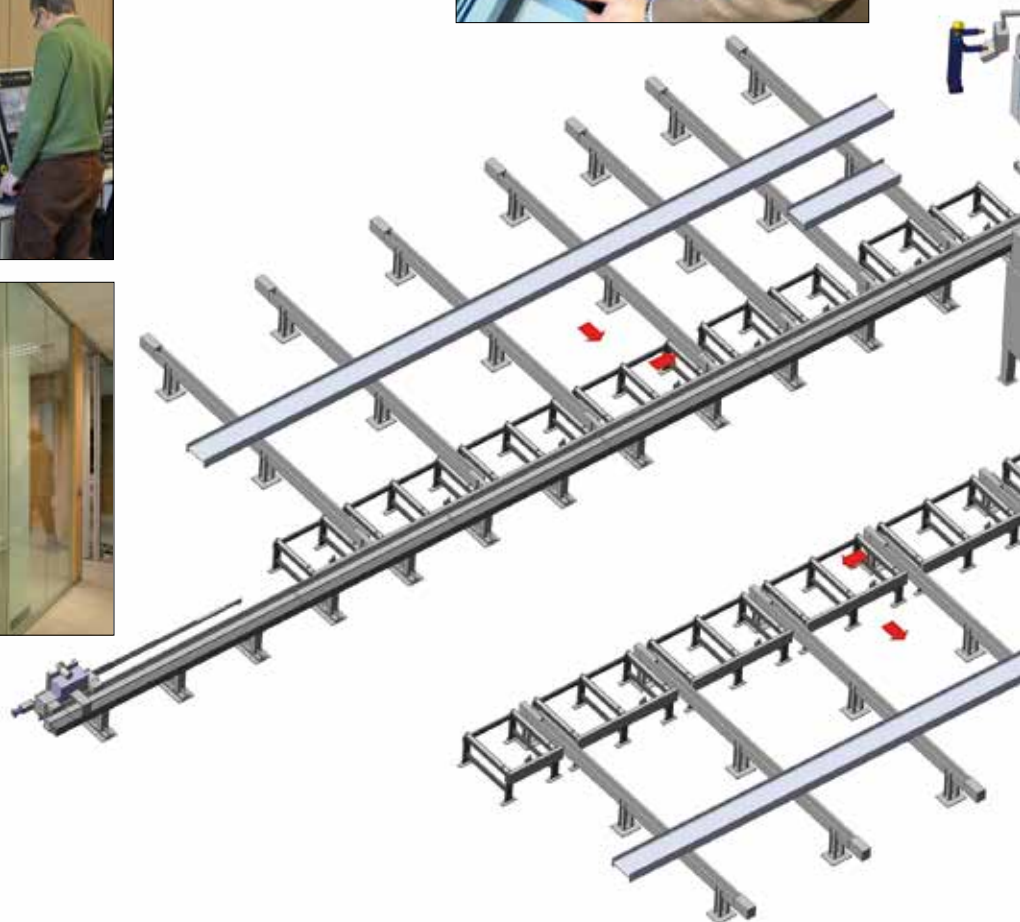




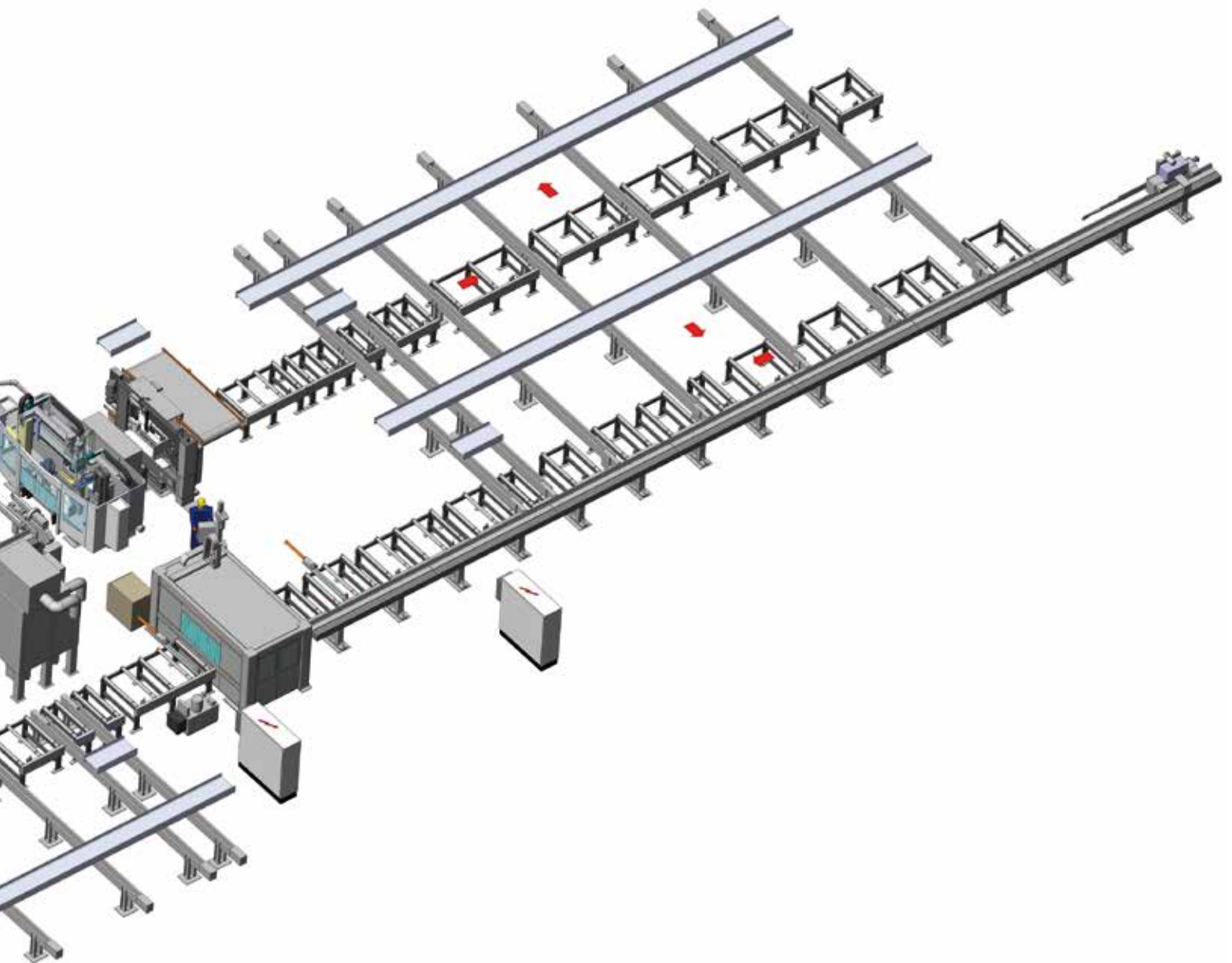
# Intelligent Steel Fabrication

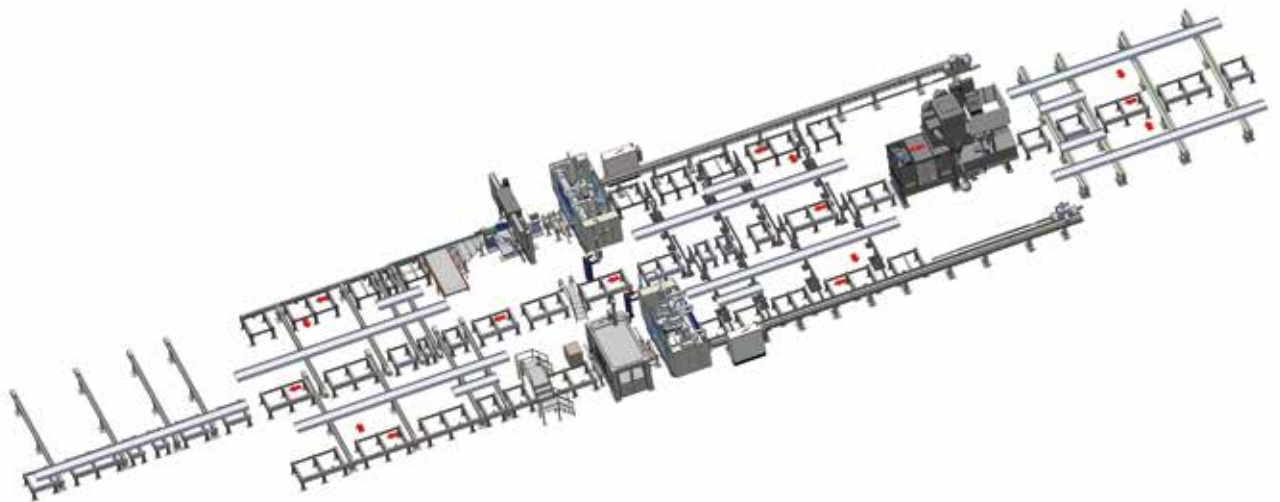
Ficep is the world leader in developing and supplying automatic, intelligent steel fabrication systems.

The continuous understanding of the customer's processes allows us to keep on developing the best solutions currently available for the structural steel fabrication industry. We have a dedicated engineering department and sophisticated software in use to carry out challenging production capacity calculations based on each project's requirements and layout proposals. This way we can study the optimal solution for each type of customer.

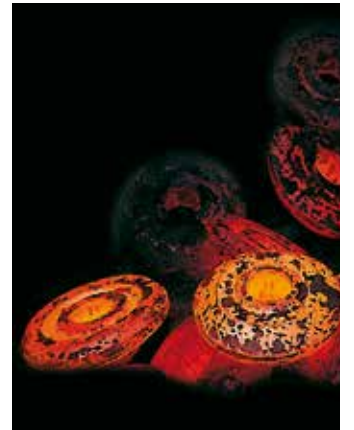














**FICEP S.p.A. - HEADQUARTERS**  
via Matteotti, 21  
21045 GAZZADA SCHIANO VA - ITALY  
Tel +39 0332 876111  
Fax +39 0332 462459  
Email: [ficep@ficep.it](mailto:ficep@ficep.it) • [www.ficepgroup.com](http://www.ficepgroup.com)



#### **FICEP France**

Z.I. "Les Platanes" – CS 80101  
33360 Camblanes - FRANCE  
Tel. +33 (0) 556 201555  
Fax +33 (0) 556 201555  
Email: [ficep@ficep-france.fr](mailto:ficep@ficep-france.fr)

#### **FICEP Corporation**

2301 Industry Court - Forest Hill Industrial Park  
Forest Hill, MD 21050 – USA  
Tel. +1 410 588 5800  
Fax +1 410 588 5900  
Email: [info@ficepcorp.com](mailto:info@ficepcorp.com)

#### **FICEP Iberica**

Parque Empresarial INBISA  
Avda. de los Olmos, 1- Edificio D-2, Oficina 117  
01013 Vitoria - SPAIN  
Tel. 945 14 83 11  
Fax 945 14 81 37  
Email: [ficep@ficepiberica.com](mailto:ficep@ficepiberica.com)

#### **FICEP Hong Kong**

Unit 204, 2nd floor - Block C  
DB Plaza Discovery Bay - HONG KONG  
Tel. +852 2544 6888  
Fax +852 2544 5123  
Email: [info@ficep.com.hk](mailto:info@ficep.com.hk)

#### **FICEP Guangzhou Machinery Co., Ltd**

Room 2010, Guangzhou Peace World Plaza  
No 362-366 Huan Shi Dong Rd.  
Yuexiu District - Guangzhou - P.R. CHINA  
Tel. +86-20-8375 2871  
Fax +86-20-8388 1779  
Email: [ficep-guangzhou@ficep.com.hk](mailto:ficep-guangzhou@ficep.com.hk)

#### **FICEP UK**

3 Gilcar Way Victoria Park  
Wakefield Europort  
Normanton WF10 5QS – UK  
Tel. +44 192 4223530  
Fax +44 192 4223666  
Email: [info@ficep.co.uk](mailto:info@ficep.co.uk)

#### **FICEP DE**

Otto Hahn Strasse 46  
48529 Nordhorn – GERMANY  
Tel. +49 5921 304570  
Fax +49 5921 3045729  
Email: [info@ficep.de](mailto:info@ficep.de)

#### **FICEP Middle East**

144 El-Alam Str. Forest Bldg., Badaro  
Beirut Court House P.O. Box 2019/116  
Beirut – LEBANON  
Tel. +961 1 386664  
Fax +961 1 386011  
Email: [info@ficep-me.com](mailto:info@ficep-me.com)

#### **FICEP Ireland**

Tel. +44 192 422 3530  
Mobile +44 771 161 0244  
Mobile +44 773 959 0022  
Email: [info@ficep.co.uk](mailto:info@ficep.co.uk)

#### **FICEP Mexico**

Av. De la Victoria #235  
Local 1 Plaza Victoria  
Fracc. Mixto La Loma, C.P. 78216  
San Luis Potosí - MEXICO  
Tel. +52 444 825 6151- 835 6163  
Email: [joseba@ficepmexico.com.mx](mailto:joseba@ficepmexico.com.mx)

#### **FICEP Sul America Service**

Av. Felício Marinelli, 444  
Jardim Medina  
Poà - Sao Paulo – BRASIL  
Tel/Fax +55 11 4636 8798  
Email: [info@ficepsulamerica.com.br](mailto:info@ficepsulamerica.com.br)

#### **FICEP Austria Service**

MTL Service  
Steinbrückl 17  
7531 Kemetten - AUSTRIA  
Tel. +43 (0)3352 / 6555 10  
Fax +43 (0)3352 / 6555 70  
Email: [office@mtl-austria.com](mailto:office@mtl-austria.com)

#### **FICEP Russia**

МОСКОВСКИЙ ОФИС  
127051, Москва, ул. Петровка, 20/1, офис 36.  
Тел. +7 4956423794, +7 4956423624  
Факс: +7 4955858696  
Email: [pmcm@mail.ru](mailto:pmcm@mail.ru)

#### **FICEP India Service**

Pradman Engineering Services Pvt. Ltd.  
Plot No A-490, Road U, Opp. DGP Windsor,  
Next to Irmra, Wagle Industrial Estate,  
Thane (W) - 400604 India  
Tel. +91 2225806179 / 80  
Mobile +91 9702701730