



Steel Projects **PLM**

Drive your production



**PARTS
MANAGER**



**PROJECT
MANAGER**



**PRODUCTION
MANAGER**



Steel Projects

A FICEP GROUP COMPANY

Our solution is **UNIQUE** and offers **UNRIVALED** production efficiency

We help you manage production by looking at three basic issues from a very unique viewpoint:

1. What needs to be fabricated?

Steel Projects PLM analyzes the sections sizes and types, full geometry, and relationships between the various components. In addition we also analyze the operations that need to occur on each component.

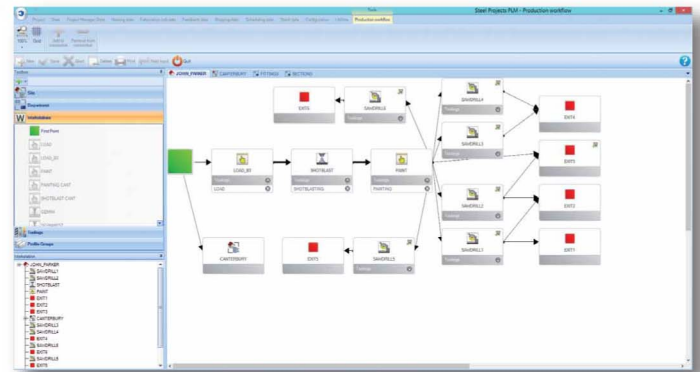
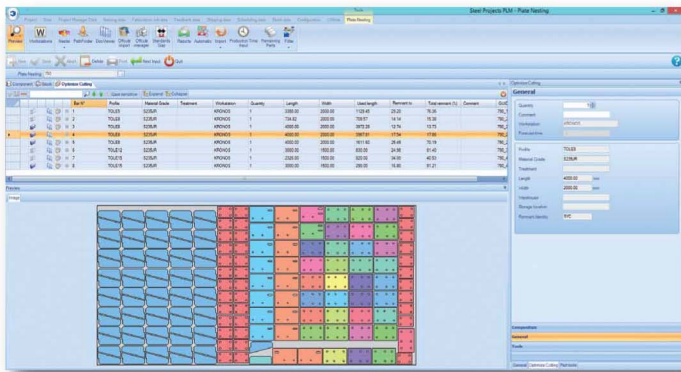
2. What are the capabilities of your shop?

Steel Projects PLM stores a comprehensive representation of your shop[s], including number and types of CNC machines and manual workstations, capabilities of your workstations, your preferred workflow, and constraints built into your workflow.

We also capture the tooling, configuration and operations available at each CNC machine and workstation.

3. What is the best way to fabricate the project given your shop capabilities?

Steel Projects PLM can now either automate or guide your production to be as efficient as possible. We match the operations required to the operations available and automate material management, nesting and production routing accordingly.



Drive Your Production!



PLM means Product Lifecycle Management and that's why our software is called Steel Projects PLM: It integrates people, processes, business systems, data, and drives top line revenue and continuous improvement. While **focusing on production**, Steel Projects PLM enables steel fabricators to manage and converge data from disparate systems and processes.

It's a unique and essential approach to increase your bottom line! Steel Projects PLM:

- ✓ *Increases your production*
- ✓ *Maximizes your resources and capabilities*
- ✓ *Helps you gain flexibility*
- ✓ *Simplifies processes*
- ✓ *Optimizes the use of raw materials*
- ✓ *Manages traceability*
- ✓ *Improves your clients' satisfaction*

A Tiered, Scalable Solution for Fabricators of all sizes

Small Fabrication → Large Fabrication, Multiple Machines, Automatic Systems, Multi-Site



Simple to use & install, standalone solution → Networked configurable solution → Enterprise solution networked equipment

Steel Projects PLM is a scalable solution for fabricators of all sizes. Customers can start with a simple standalone solution and slowly evolve toward Intelligent Steel Fabrication by adding modules, and upgrading capability toward a completely automated facility.

PRODUCT AREA/MODULE	Parts Manager	Project Manager	Production Manager
PROJECT PLANNING & PREPARATION			
Integrated Drawing Package - create, edit parts	S	S	S
Assembly Management		S	S
2D/3D visualization	S	S	S
Revision Management		S	S
Import CAD	O	O	O
Import BIM	O	O	O
MATERIAL PLANNING			
Manual/Basic Linear Nesting	S	S	S
Automatic Profile Nesting	O	O	O
Fully Integrated Plate Nesting	O	O	O
PRODUCTION PLANNING			
Production Manager Viewer			O
Part Checking and Validation		S	S
Workflow Management			S
Workstation Management			S
Fabrication Job Creation	S	S	S
Production Analysis		S	S
Automatic and/or Manual Production Feedback			S
Production Forecasting			S
MIS & ERP Interface		O	O
Stock and Purchasing Interface	O	O	O
4D link with BIM/3D Models			O
CNC AUTOMATION			
Automatic Post Processing	O	O	O
Automatic Handling/Routing			O
Export CAM data	S	S	S
Export DSTV, DXF...	O	O	O
TRANSPORTATION MANAGEMENT			
Shipping		O	O

S=Standard; O=Optional

About Steel Projects

Steel Projects specializes in developing solutions that enable steel fabricators to:

- Plan and schedule fabrication before it begins
- Get reliable, accurate and up to date information from the detailing office
- Create an integrated shop linking material handling, equipment and workstations
- Manage change seamlessly
- Adjust production on the fly to maximize equipment utilization or avoid bottlenecks
- Easily track and record progress and share it as needed with clients

Enjoy the peace of mind that comes with knowing your shop is maximizing use of its resources and operating as efficiently as it can be; with improved material flow and increased man-hour efficiencies.

Steel Projects has been at the forefront of steel fabrication software for over 20 years and our solutions are used in more than 90 countries.



A FICEP Company



Steel Projects Is A FICEP Group Company. FICEP, founded in 1930, is the world's largest designer, manufacturer and provider of CNC machines and integrated systems for steel fabricators. Together we have developed our completely integrated, unique process combining CNC machines, material handling, workstations, waypoints and software that surpasses anything previously seen in the industry.



Steel Projects
A FICEP GROUP COMPANY

Microsoft Partner

Silver Data Platform
Silver Application Development



Learn More:

www.SteelProjects.com